

\$299,900 - 4724 Uplands Dr 310, Nanaimo

MLS® #1000096

\$299,900

1 Bedroom, 1.00 Bathroom, 850 sqft
Residential

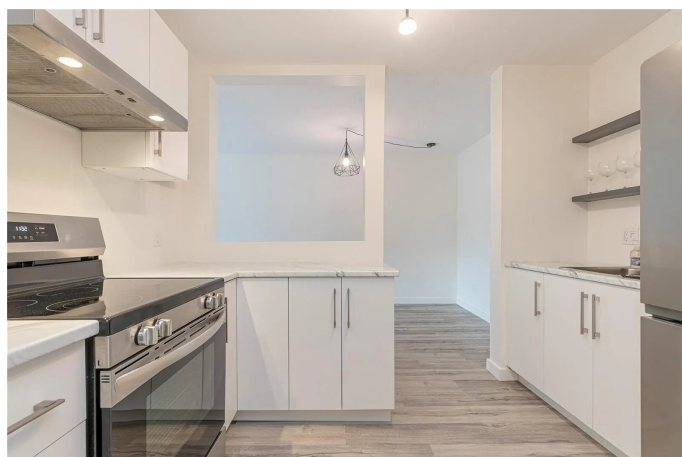
NORTHRIDGE, Nanaimo, BC

Welcome to this beautifully updated third-floor condo on Uplands Drive! This bright and spacious one-bedroom, one-bath unit features a desirable north-facing balcony and an open-concept layout with an additional den area—perfect for a home office or creative space. Recently renovated throughout, the condo showcases new flooring, a modern kitchen with upgraded cabinetry, stylish countertops, and stainless steel appliances, along with a refreshed bathroom. With a smart layout and approximately 800 sq ft of living space, there's room to relax and entertain in comfort. Enjoy the convenience of being steps away from shopping, amenities, and public transportation. This condo is move-in ready and in excellent condition and its pet friendly (dog or cat) don't miss your chance to view it!

Built in 1986

Essential Information

MLS® #	1000096
Price	\$299,900
Bedrooms	1
Bathrooms	1.00
Square Footage	850
Year Built	1986
Type	Residential
Sub-Type	Condo Apartment



Status	Active
--------	--------

Community Information

Address	4724 Uplands Dr 310
Area	Na Uplands
Subdivision	NORTHRIDGE
City	Nanaimo
County	Nanaimo, City of
Province	BC
Postal Code	V9T 4S8

Amenities

Amenities	Secured Entry
Parking Spaces	1
Parking	Guest, Open
# of Kitchens	1

Interior

Heating	Baseboard, Electric
Cooling	None
# of Stories	4

Exterior

Exterior Features	Balcony/Patio
Roof	Other
Construction	Insulation: Ceiling, Insulation: Walls
Foundation	Poured Concrete

Additional Information

Date Listed	May 16th, 2025
Days on Market	151
Office	REMAX Professionals

Listing Details

Listing Office	REMAX Professionals
----------------	---------------------

MLS® property information is provided under copyright© by the Vancouver Island Real Estate Board and Victoria Real Estate Board. The information is from sources deemed reliable, but should not be relied upon without independent verification.