

\$2,580,000 - 1015 Park Ave, Nanaimo

MLS® #1009044

\$2,580,000

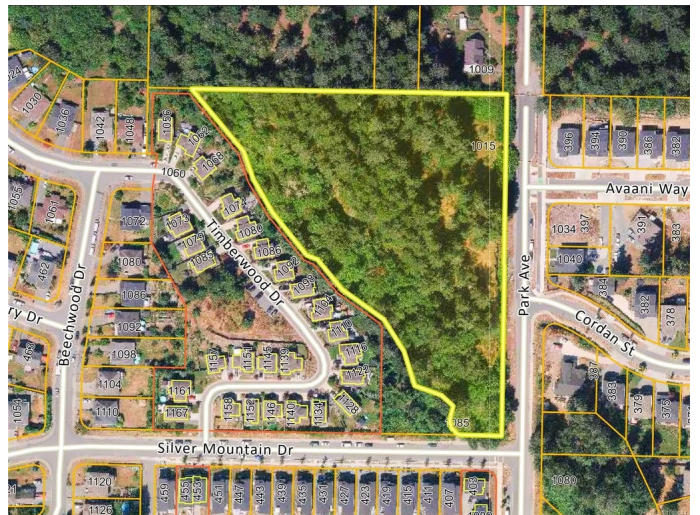
0 Bedroom, 0.00 Bathroom,
Residential on 4.75 Acres

N/A, Nanaimo, BC

Prime Multi-Family Development Opportunity in South Nanaimo. This is an exceptional 4.74-acre development site in one of Nanaimo's fastest-growing neighborhoods, surrounded by newly built million-dollar homes. A now expired development permit for a multi-family development, consisting of 14 single-family homes, was approved in 2017, but a new survey supports up to 23 single-family homes or stacked townhouses with the current R10 zoning. And the City may allow site-specific density up to 35 units with a feasible site design meeting zoning guidelines. And the Citywide Parking Review is expected to ease parking requirements, adding more potential benefits. Ideally located near transit, schools, shopping and VIU, this is an opportunity to provide modern, affordable homes in a highly desirable location. Due diligence reports available to serious buyers. The Buyer must independently verify all property details and development potential through the City of Nanaimo or qualified professionals.

Essential Information

| | |
|-----------|-------------|
| MLS® # | 1009044 |
| Price | \$2,580,000 |
| Bathrooms | 0.00 |
| Acres | 4.75 |
| Type | Residential |



| | |
|----------|-------------------|
| Sub-Type | Land |
| Status | Active |
| View | City, Mountain(s) |

Community Information

| | |
|-------------|------------------|
| Address | 1015 Park Ave |
| Area | Na South Nanaimo |
| Subdivision | N/A |
| City | Nanaimo |
| County | Nanaimo, City of |
| Province | BC |
| Postal Code | V9R 4J5 |

Amenities

| | |
|------|-------------------|
| View | City, Mountain(s) |
|------|-------------------|

Additional Information

| | |
|----------------|--------------------------------------|
| Date Listed | August 1st, 2025 |
| Days on Market | 71 |
| Office | Sutton Group-West Coast Realty (Nan) |
| Zoning | R10 |

Listing Details

| | |
|----------------|--------------------------------------|
| Listing Office | Sutton Group-West Coast Realty (Nan) |
|----------------|--------------------------------------|

MLS® property information is provided under copyright© by the Vancouver Island Real Estate Board and Victoria Real Estate Board. The information is from sources deemed reliable, but should not be relied upon without independent verification.