

\$499,900 - 104 Bray Rd, Nanaimo

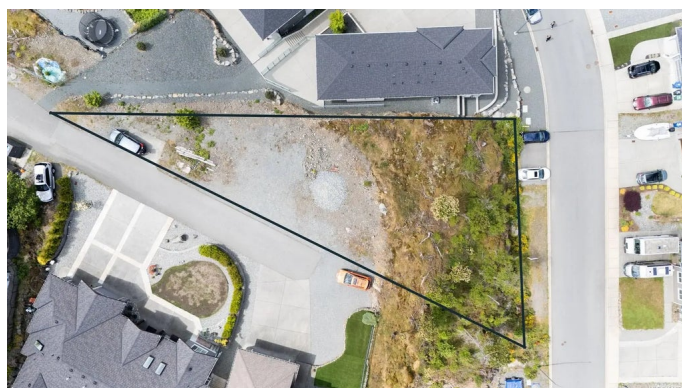
MLS® #1011744

\$499,900

0 Bedroom, 0.00 Bathroom,
Residential on 0.30 Acres

N/A, Nanaimo, BC

This 13,000 sq.ft. lot is the last lot that offers sun exposure, ocean views, & valley views & is perched over the rest of the development adding an element of freedom. The piece of land features private laneway access off of Cottleview Drive & has all city services including natural gas. A level entry home w/ a walkout basement would work beautifully on this lot. The opportunities are endless to build your dream home. Located in a desirable area of Nanaimo, places like Departure Bay Beach, Stephenson Point, & Piper's Lagoon Park are all less than a 5-min drive providing all sorts of activities such as a waterpark, a sports field, tennis courts, cafes, & food trucks. Just a 10-min drive to the Island Highway to easily access other parts of Nanaimo & destinations across Vancouver Island. Minutes away from BC Ferries & seaplane services, there is convenient access to the Lower Mainland & a number of Gulf Islands. (Measurements & data approximate & should be verified if important.)



Essential Information

MLS® #	1011744
Price	\$499,900
Bathrooms	0.00
Acres	0.30
Type	Residential
Sub-Type	Land
Status	Active

View	Mountain(s), Ocean
------	--------------------

Community Information

Address	104 Bray Rd
Area	Na Departure Bay
Subdivision	N/A
City	Nanaimo
County	Nanaimo, City of
Province	BC
Postal Code	V9T 0C2

Amenities

Utilities	Natural Gas Available
View	Mountain(s), Ocean

Additional Information

Date Listed	August 21st, 2025
Days on Market	51
Office	eXp Realty (NA)

Listing Details

Listing Office	eXp Realty (NA)
----------------	-----------------

MLS® property information is provided under copyright© by the Vancouver Island Real Estate Board and Victoria Real Estate Board. The information is from sources deemed reliable, but should not be relied upon without independent verification.