

\$98,900 - 6820 Parklands Pl 20, Lantzville

MLS® #1013551

\$98,900

1 Bedroom, 1.00 Bathroom, 499 sqft

Residential

N/A, Lantzville, BC

Take a look at this affordable living in ever poplar Lantzville's Parklands 55+ mobile home park. Vinyl windows, electric fireplace, large living room , big bedroom, updated roof ,covered patio , storage shed, are just some of the features you will enjoy. Pets welcome with restriction's. Great location close to Lantzville village, beaches, North Nanaimo shopping and just in case you golf, Winchelsea golf course. Make sure you check this great home out . You will not be sorry you did. Quick possession too if needed!

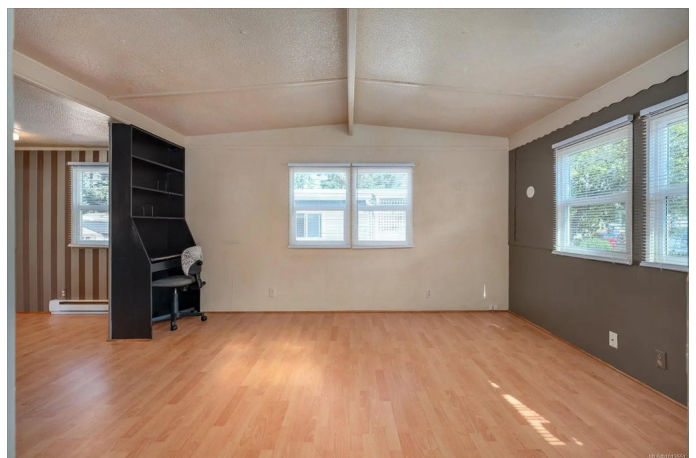
Built in 1968

Essential Information

MLS® #	1013551
Price	\$98,900
Bedrooms	1
Bathrooms	1.00
Square Footage	499
Year Built	1968
Type	Residential
Sub-Type	Manufactured Home
Status	Active
View	Other

Community Information

Address	6820 Parklands Pl 20
Area	Na Upper Lantzville
Subdivision	N/A



City	Lantzville
County	Lantzville, District of
Province	BC
Postal Code	V0R 2H0

Amenities

Utilities	Cable To Lot, Electricity To Lot, Garbage, Phone Available, Recycling
Parking Spaces	1
Parking	Driveway
# of Kitchens	1
View	Other

Interior

Heating	Electric
Cooling	Window Unit(s)
Fireplace	Yes
# of Fireplaces	1
Fireplaces	Electric

Exterior

Exterior Features	Balcony/Deck
Windows	Insulated Windows, Vinyl Frames
Roof	Membrane
Construction	Aluminum Siding, Frame Metal, Insulation All
Foundation	Other

Additional Information

Date Listed	September 9th, 2025
Days on Market	35
Office	Royal LePage Nanaimo Realty (NanIsHwyN)

Listing Details

Listing Office	Royal LePage Nanaimo Realty (NanIsHwyN)
----------------	---

MLS® property information is provided under copyright© by the Vancouver Island Real Estate Board and Victoria Real Estate Board. The information is from sources deemed reliable, but should not be relied upon without independent verification.