

\$1,200,000 - 1000 Brookfield Cres, Parksville

MLS® #1015739

\$1,200,000

3 Bedroom, 2.00 Bathroom, 1,812 sqft

Residential on 0.15 Acres

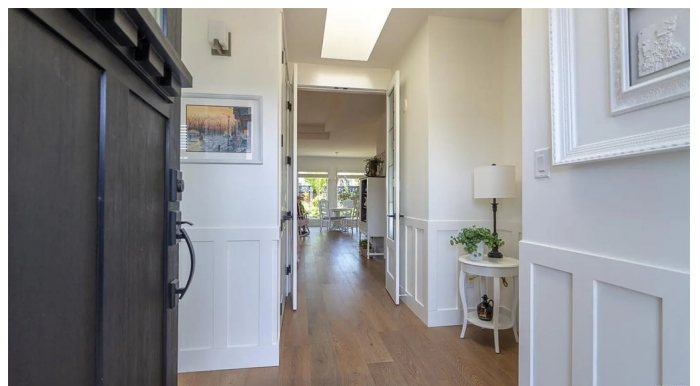
N/A, Parksville, BC

Welcome to Mountain View Estates™ where elegance meets ease. This pristine 3-bed, 2-bath executive rancher offers airy comfort with vaulted ceilings, skylights, and oversized windows filling the home with light. The open-concept plan flows into a gourmet kitchen with quartz counters, stainless appliances, and a walk-in pantry. The primary suite features a spa-inspired ensuite with heated tile floors and a generous walk-in closet. Enjoy the private south-facing courtyard or entertain in the beautifully landscaped backyard with a covered deck, gardens, and fruit trees. Just minutes to Morningstar Golf, Wembley Mall, and sandy beaches, this home perfectly balances community and coastal living. Added features include a double garage with attic storage, hot water on demand, central vac, and Gemstone Lighting for year-round curb appeal. Experience relaxed West Coast living at its finest in Parksville™'s most sought-after enclave. Present owner updates are fantastic, book to have a viewing.

Built in 2019

Essential Information

MLS® #	1015739
Price	\$1,200,000
Bedrooms	3
Bathrooms	2.00



Square Footage	1,812
Acres	0.15
Year Built	2019
Type	Residential
Sub-Type	Single Family Detached
Style	Character
Status	Active
View	Mountain(s)

Community Information

Address	1000 Brookfield Cres
Area	PQ French Creek
Subdivision	N/A
City	Parksville
County	Nanaimo Regional District
Province	BC
Postal Code	V9P 0E3

Amenities

Utilities	Cable To Lot, Electricity To Lot, Garbage, Natural Gas To Lot, Recycling
Parking Spaces	2
Parking	Attached, EV Charger: Common Use - Installed, EV Charger: Dedicated - Installed, Garage
# of Garages	1
# of Kitchens	1
View	Mountain(s)

Interior

Interior Features	Dining Room, Eating Area
Appliances	Dishwasher, F/S/W/D, Garburator, Microwave, Range Hood
Heating	Forced Air, Natural Gas
Cooling	None
Fireplace	Yes
# of Fireplaces	1
Fireplaces	Gas

Exterior

Exterior Features	Balcony/Patio, Fencing: Full, Garden, Sprinkler System
Windows	Vinyl Frames

Roof	Asphalt Shingle
Construction	Cement Fibre, Frame Wood, Insulation All
Foundation	Poured Concrete

Additional Information

Date Listed	October 8th, 2025
Days on Market	6
Office	Pemberton Holmes Ltd.
Zoning	RS1

Listing Details

Listing Office	Pemberton Holmes Ltd.
----------------	-----------------------

MLS® property information is provided under copyright© by the Vancouver Island Real Estate Board and Victoria Real Estate Board. The information is from sources deemed reliable, but should not be relied upon without independent verification.