

# \$28 - 1305 Rocky Creek Rd Cru 3, Ladysmith

MLS® #1016117

**\$28**

Bedroom, Bathroom, 1,524 sqft  
Commercial Lease

N/A, Ladysmith, BC

CRU3 â€“ Building B at Marina View Estates is a 1,524 SF Mixed Use office/retail unit located just 500 metres from the Ladysmith Harbour, and 3 minutes off of the highway and downtown Ladysmith.

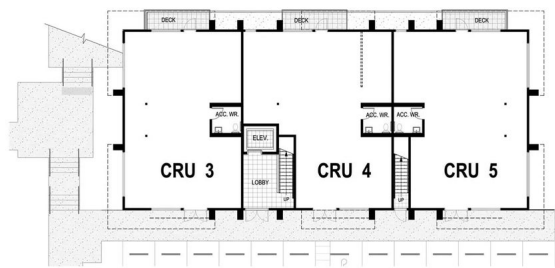
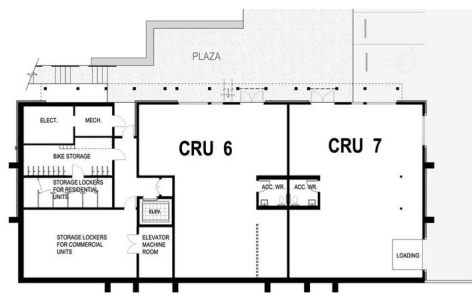
Building B is two-storey structure, complete with an elevator for accessibility, and units or entrances at two different grade levels. It offers ample parking, and customizable shell condition spaces for a wide range of businesses. Permitted uses include, but are not limited to: office, medical, veterinary, personal service, cafÃ©, bakery, community care, or retail.

CRU 3 can be combined with up to 4 other Building B CRUs on the lower and main levels for a range of 1,524-8,356 SF. Inducement packages are available, please contact listing agent for more information, including completion dates.

## Essential Information

MLS® #	1016117
Price	\$28
Square Footage	1,524
Type	Commercial Lease
Sub-Type	Office
Status	Active

## Community Information



Address	1305 Rocky Creek Rd Cru 3
Area	Du Ladysmith
Subdivision	N/A
City	Ladysmith
County	Cowichan Valley Regional District
Province	BC
Postal Code	V9G 1K4

### **Interior**

Heating	Heat Pump
Cooling	HVAC

### **Additional Information**

Date Listed	October 8th, 2025
Days on Market	6
Office	RE/MAX Camosun

### **Listing Details**

Listing Office	RE/MAX Camosun
----------------	----------------

MLS® property information is provided under copyright© by the Vancouver Island Real Estate Board and Victoria Real Estate Board. The information is from sources deemed reliable, but should not be relied upon without independent verification.