

\$28 - 1305 Rocky Creek Rd Cru 7, Ladysmith

MLS® #1016125

\$28

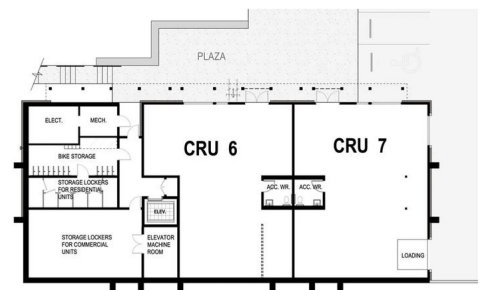
Bedroom, Bathroom, 1,740 sqft
Commercial Lease

N/A, Ladysmith, BC

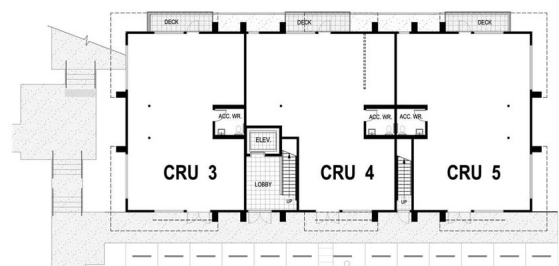
CRU7 â€“ Building B at Marina View Estates is a 1,740 SF Mixed Use office/retail unit located just 500 metres from the Ladysmith Harbour, and 3 minutes off of the highway and downtown Ladysmith.

Building B is two-storey structure, complete with an elevator for accessibility, and units or entrances at two different grade levels. It offers ample parking, and customizable shell condition spaces for a wide range of businesses. Permitted uses include, but are not limited to: office, medical, veterinary, personal service, cafÃ©, bakery, community care, or retail.

CRU 7 can be combined with up to 4 other Building B CRUs on the lower and main levels for up to 8,356 SF. Inducement packages are available, please contact listing agent for more information, including completion dates.



LEVEL 1 - BUILDING B



LEVEL 2 - BUILDING B

Essential Information

MLS® #	1016125
Price	\$28
Square Footage	1,740
Type	Commercial Lease
Sub-Type	Office
Status	Active

Community Information

Address	1305 Rocky Creek Rd Cru 7
Area	Du Ladysmith
Subdivision	N/A
City	Ladysmith
County	Cowichan Valley Regional District
Province	BC
Postal Code	V9G 1K4

Interior

Heating	Heat Pump
Cooling	HVAC

Additional Information

Date Listed	October 8th, 2025
Days on Market	6
Office	RE/MAX Camosun

Listing Details

Listing Office	RE/MAX Camosun
----------------	----------------

MLS® property information is provided under copyright© by the Vancouver Island Real Estate Board and Victoria Real Estate Board. The information is from sources deemed reliable, but should not be relied upon without independent verification.