

# \$324,900 - 3710 Argyle Way, Port Alberni

MLS® #1017420

## \$324,900

3 Bedroom, 1.00 Bathroom, 1,200 sqft  
Residential on 0.03 Acres

ARGYLE WAY, Port Alberni, BC

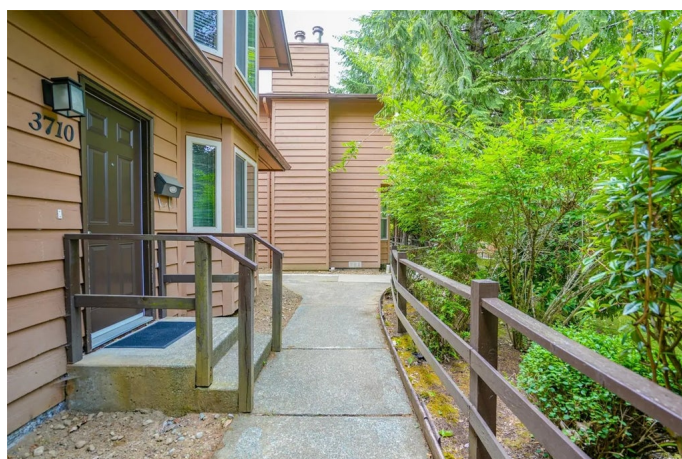
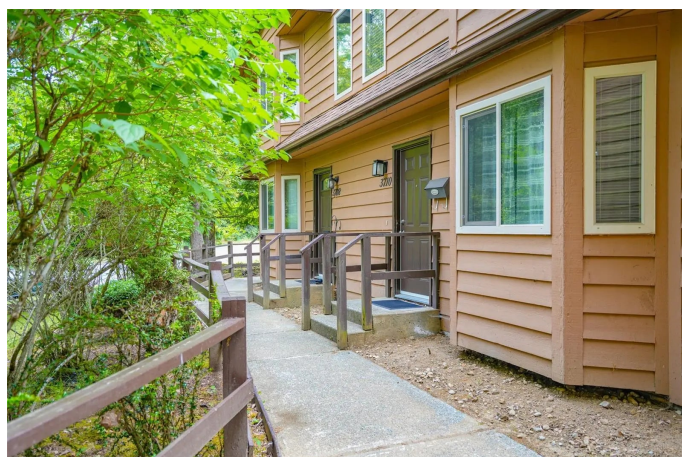
3710 Argyle Way- This 3 bedroom, 1-bathroom townhouse, located at the end of the block offering a quiet setting, is perfect for someone looking to get into the market, or for an investor looking for a rental property. The main floor offers fresh paint throughout a spacious living room, dining area, and cozy kitchen. The primary bedroom features a walk-in closet and a balcony area for enjoying your morning coffee, while the remainder of this townhouse offers two more bedrooms and an updated four-piece main bathroom. Located close to EJ Dunn School, walking trails, bus routes and shopping, this location may check all your boxes. Call today to book your showing!!

Built in 1982

## Essential Information

MLS® #	1017420
Price	\$324,900
Bedrooms	3
Bathrooms	1.00
Square Footage	1,200
Acres	0.03
Year Built	1982
Type	Residential
Sub-Type	Row/Townhouse
Status	Active

## Community Information



Address	3710 Argyle Way
Area	PA Port Alberni
Subdivision	ARGYLE WAY
City	Port Alberni
County	Port Alberni, City of
Province	BC
Postal Code	V9Y 8A6

### **Amenities**

Parking Spaces	1
Parking	Driveway
# of Kitchens	1

### **Interior**

Appliances	Dishwasher, F/S/W/D
Heating	Baseboard, Electric
Cooling	None
# of Stories	2

### **Exterior**

Exterior Features	Balcony/Patio
Roof	Fibreglass Shingle
Construction	Frame Wood, Wood
Foundation	Poured Concrete

### **Additional Information**

Date Listed	October 13th, 2025
Days on Market	2
Office	RE/MAX Mid-Island Realty
Zoning	RM1

### **Listing Details**

Listing Office	RE/MAX Mid-Island Realty
----------------	--------------------------

MLS® property information is provided under copyright© by the Vancouver Island Real Estate Board and Victoria Real Estate Board. The information is from sources deemed reliable, but should not be relied upon without independent verification.