

# \$1,300,000 - 4176 Wellesley Ave A, Nanaimo

MLS® #1017451

**\$1,300,000**

3 Bedroom, 4.00 Bathroom, 2,926 sqft

Residential on 0.12 Acres

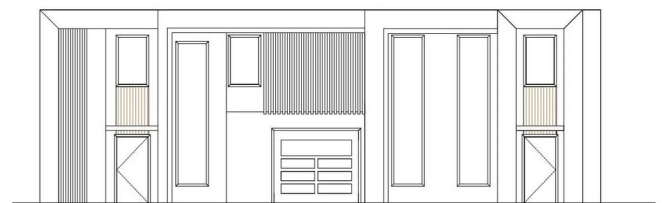
N/A, Nanaimo, BC

Semi waterfront 3-story townhome with stunning lake and mountain views. The open-concept main floor features a modern kitchen, dining, and living area with access to a view deck, wall-mounted gas fireplace, 2-piece bath, and single-car garage. Upstairs offers two primary bedrooms, each with walk-in closets and full ensuites, plus laundry for added convenience. The walk-out lower level steps right to the water and includes a spacious rec room, 3rd bedroom, 4-piece bath, large storage area, and mechanical room. Quartz countertops, custom cabinetry, and high-end finishes throughout. Buyers may choose colours and finishings (within reason) at this stage. All measurements are approximate and subject to change pending city approval. subject to change.

Built in 2026

## Essential Information

MLS® #	1017451
Price	\$1,300,000
Bedrooms	3
Bathrooms	4.00
Square Footage	2,926
Acres	0.12
Year Built	2026
Type	Residential
Sub-Type	Half Duplex



FRONT ELEVATION  
SCALE: 3/8" = 1'-0"



PICTURE  
SCALE

MLS®1017451

Style	West Coast
Status	Active
View	Mountain(s), Lake

### Community Information

Address	4176 Wellesley Ave A
Area	Na Uplands
Subdivision	N/A
City	Nanaimo
County	Nanaimo, City of
Province	BC
Postal Code	V9T 2B8

### Amenities

Utilities	Cable To Lot, Compost, Electricity To Lot, Garbage, Natural Gas To Lot, Phone To Lot, Recycling
Parking Spaces	3
Parking	Driveway, EV Charger: Dedicated - Roughed In, Garage
# of Garages	1
# of Kitchens	1
View	Mountain(s), Lake
Is Waterfront	Yes
Waterfront	Lake

### Interior

Interior Features	Dining/Living Combo, Storage, Wine Storage
Appliances	F/S/W/D
Heating	Forced Air, Heat Pump
Cooling	Air Conditioning, HVAC
Fireplace	Yes
# of Fireplaces	1
Fireplaces	Gas
# of Stories	3

### Exterior

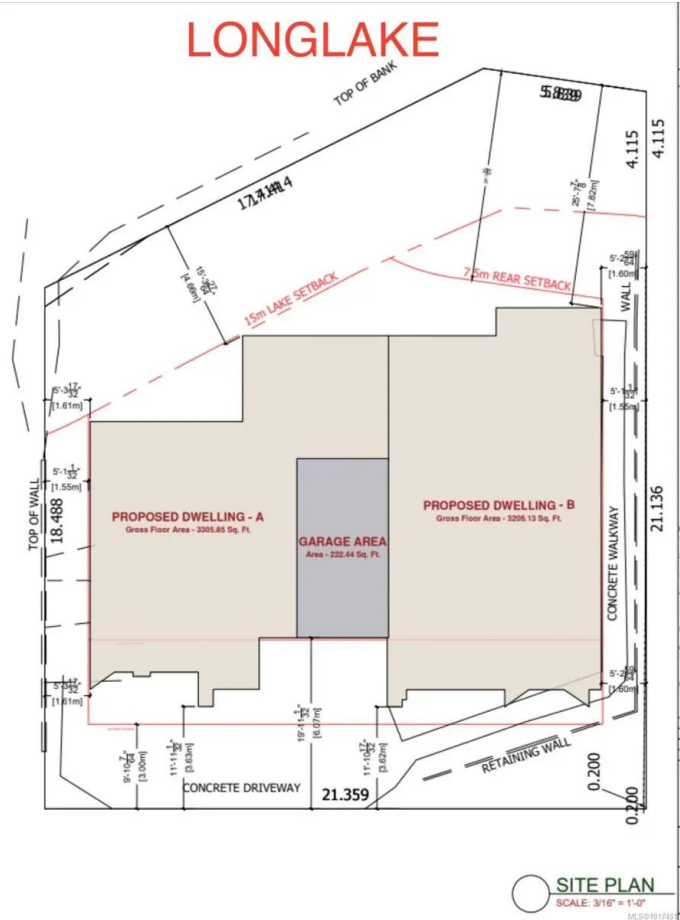
Exterior Features	Balcony/Patio, Fencing: Partial
Roof	Asphalt Torch On, Membrane
Construction	Stucco
Foundation	Poured Concrete, Slab

Additional Information

Date Listed           October 14th, 2025  
Days on Market       1  
Office                 Sutton Group-West Coast Re

Listing Details

Listing Office         Sutton Group-West Coast Real



MLS® property information is provided under copyright© by the Vancouver Island Real Estate Board and Victoria Real Estate Board. The information is from sources deemed reliable, but should not be relied upon without independent verification.