

\$1,300,000 - 4176 Wellesley Ave B, Nanaimo

MLS® #1017475

\$1,300,000

4 Bedroom, 4.00 Bathroom, 2,915 sqft
Residential on 0.12 Acres

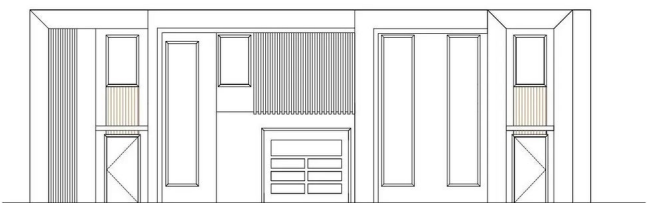
N/A, Nanaimo, BC

Beach-inspired 3-story townhome with stunning lake and mountain views. The open-concept main floor features a modern kitchen, dining, and living area with access to a view deck, wall-mounted gas fireplace, 2-piece bath, and single-car garage. Upstairs offers two primary bedrooms, each with walk-in closets and full ensuites, plus laundry for added convenience. The walk-out lower level steps right to the water and includes a spacious rec room, 3rd bedroom, 4-piece bath, large storage area, and mechanical room. Quartz countertops, custom cabinetry, and high-end finishes throughout. Buyers may choose colours and finishings (within reason) at this stage. All measurements are approximate and subject to change pending city approval. subject to change.

Built in 2026

Essential Information

| | |
|----------------|-------------|
| MLS® # | 1017475 |
| Price | \$1,300,000 |
| Bedrooms | 4 |
| Bathrooms | 4.00 |
| Square Footage | 2,915 |
| Acres | 0.12 |
| Year Built | 2026 |
| Type | Residential |
| Sub-Type | Half Duplex |

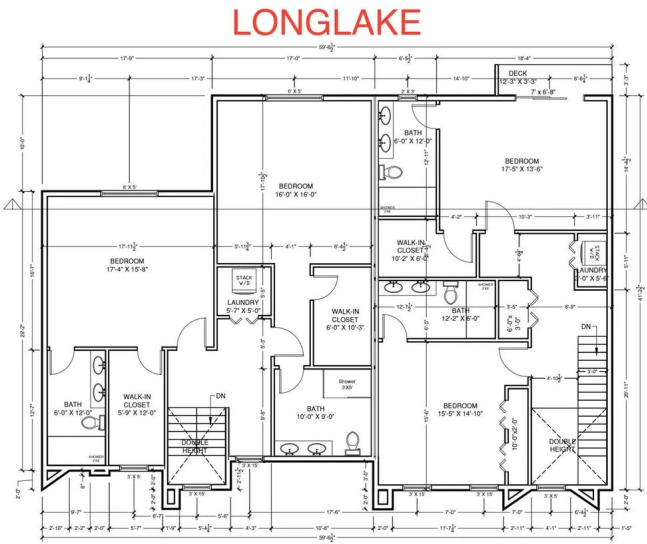


FRONT ELEVATION



PICTURE

MLS® 1017475



DWELLING - A

DWELLING - B

Page 4 / 11

MLS® 1017475

| | |
|--------|------------|
| Style | West Coast |
| Status | Active |
| View | Lake |

Community Information

| | |
|-------------|----------------------|
| Address | 4176 Wellesley Ave B |
| Area | Na Uplands |
| Subdivision | N/A |
| City | Nanaimo |
| County | Nanaimo, City of |
| Province | BC |
| Postal Code | V9T 2B8 |

Amenities

| | |
|----------------|--|
| Utilities | Cable To Lot, Electricity To Lot, Garbage, Natural Gas To Lot, Phone To Lot, Recycling |
| Parking Spaces | 2 |
| Parking | Driveway, EV Charger: Dedicated - Roughed In, On Street |
| # of Kitchens | 1 |
| View | Lake |
| Is Waterfront | Yes |
| Waterfront | Lake |

Interior

| | |
|-----------------|-----------------------|
| Appliances | F/S/W/D |
| Heating | Forced Air, Heat Pump |
| Cooling | HVAC |
| Fireplace | Yes |
| # of Fireplaces | 1 |
| Fireplaces | Gas |
| # of Stories | 3 |

Exterior

| | |
|--------------|----------------------------|
| Roof | Asphalt Torch On, Membrane |
| Construction | Stucco, Stucco & Siding |
| Foundation | Poured Concrete, Slab |

Additional Information

| | |
|-------------|--------------------|
| Date Listed | October 14th, 2025 |
|-------------|--------------------|

| | |
|----------------|--------------------------------------|
| Days on Market | 1 |
| Office | Sutton Group-West Coast Realty (Nan) |
| Zoning | R5 |

Listing Details

| | |
|----------------|--------------------------------------|
| Listing Office | Sutton Group-West Coast Realty (Nan) |
|----------------|--------------------------------------|

MLS® property information is provided under copyright© by the Vancouver Island Real Estate Board and Victoria Real Estate Board. The information is from sources deemed reliable, but should not be relied upon without independent verification.